

**ROLL FED CUTTER SERIES**  
**NEW**



**BEST IN IT'S CLASS FOR PRECISION AND QUALITY**

**CE8000-40**  
**15"**



**CE8000-60**  
**24"**



**CE8000-130**  
**50"**





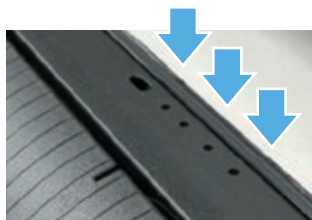
## ENGINEERED FOR HIGHER PRODUCTIVITY

The **Graphtec CE8000 Series** cutting plotter is the perfect solution for those looking to increase production with greater efficiency for **SIGNAGE Graphics • PRINT & CUT Graphics • Automotive Markets • Garment Decoration** and many more....

A **NEW TOUCH PANEL** with **MECHANICAL KEYS** gives users more flexibility with it's **Blind Touch Operation** enabling the operator to continually keep eyes on media while feeding.

**NEW Wireless LAN:** (OPTIONAL) wireless connection module which improves flexibility of installation locations.

**NEW Tool Holder:** Improved design makes it easier to change tools and blade position by sliding the stopper forward and back.



**Media Set Assist:** Suction fans help to prevent media lift and shift when feeding

### Email Notification:

Job Completion and Error Notifications can be sent to users by email

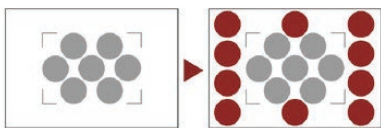
**Separate Tool Positions** for contour and die cutting ensures the longevity of your blades and cutting strip when creating decals and graphics that are effortlessly popped out of sheet and roll media.

**Data Link Barcode System** allows cutting different jobs with different data sequentially. By reading the Graphtec barcode, the CE8000 automatically detects its linked data from a PC or USB Drive.

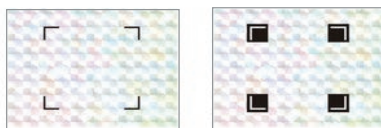
The CE8000 Series barcode data management system allows the **Continuous Cutting** of multiple jobs with different data sequentially by detecting the Start Mark of each new job.

**Advanced Registration Mark Sensing** system delivers precise Print & Cut results using sensors to detect registration marks and perform axis alignment. Efficiency boosting functions improve productivity for Print & Cut applications such as labels and decals.

**Expanded Contour Cutting Area** expands the Print & Cut area to include objects outside of the registration marks. Production efficiency is enhanced and media waste is reduced.



Expanded Contour Cutting Area



Reversed Color Registration Marks

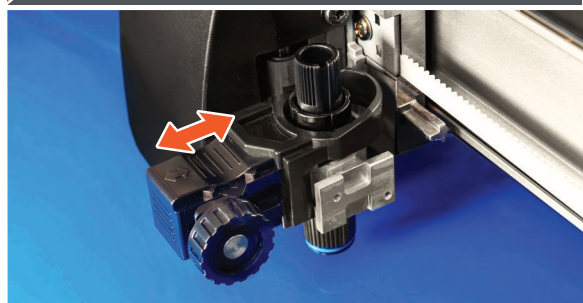
## FEATURE HIGHLIGHTS



### NEW Touch Screen with Keypad



### NEW Wireless LAN Module



### Improved Tool Holder Design



### Magnetic Storage Compartment



### DATA LINK Barcode System



Middle Marks on X & Y-axis

# CE8000 SERIES

## CAPABILITIES

**450 gf** Cutting Force  
**39"/s** Cutting Speed

### NEW Control Panel

- Touch Screen AND Mechanical Keys
- New Menu Structure
- Integrated Firmware Updates



### MORE INTUITIVE MENU STRUCTURE

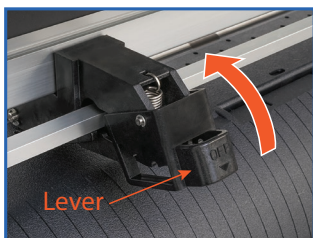
Revisions to the menu are more intuitive and efficient utilizing the **New Touch Screen Feature** with icons that allow for easier operation.

### EASY FIRMWARE UPDATING

Check and download firmware via GS2 or CM5 and install directly using a USB Flash Drive or USB cable (not supplied).

### HOLD DOWN FORCE CONTROL

CE8000-130 center push roller can engage / disengage



Hold-down force: **MEDIUM**



Hold-down force: **OFF**



## PRECISION CUTTING SOLUTIONS

## ACCESSORIES

### UPDATED BLADE HOLDER DESIGN

**Blade:**  
CB09UB



**Blade Holder:**  
PHP33-CB09N-HS

### Optional Accessories Available for Purchase:

- Media Basket
- Carrier Sheet Table
- Blade Loupe
- Roll Media Tray

### Included Design Software and Plugin:

Dedicated design software and plug-ins provide all of the tools necessary to create elegant and professional products.

- **Cutting Master 5 Plug-in:**  
Adobe Illustrator (PC / MAC)  
CorelDRAW (PC)



- **Graphtec Studio 2:**  
Design Software - PC / MAC
- Windows Driver



**VIDEO TRAINING**  
PRESS PLAY ► GET TO WORK



**GRAPHTEC 2 YEAR STANDARD WARRANTY**

## MARKET APPLICATIONS



Vinyl Signage



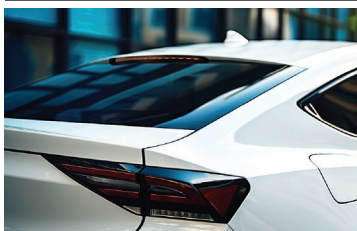
POP - Packaging



Stencils



DTF / Heat Transfer



Window Tinting Film



Party Decorations



Vinyl Decals



Product Labels



# CE8000 SPECIFICATIONS

**GRAPHTEC**  
PRECISION CUTTING SOLUTIONS



SCAN ME

## CE8000-40



## CE8000-60



## CE8000-130



### MODEL :

**Configuration :** Grit-rolling Plotter Driven by a Digital Servo Motor - 32bit CPU • Buffer Memory: 2MB

<b>Maximum Cutting Width :</b>	15" x 164'	24" x 164'	50" x 164'
<b>* Guaranteed Tracking :</b>	14" x 79" *1	23" x 79" / 23" x 16.4' *1 / *2	50" x 79" / 49" x 16.4' *1 / *2
<b>Mountable Media Width :</b>	2" to 19"	2" to 30"	2" to 54"
<b>Maximum Cutting Speed :</b>	24"/s in all directions	35"/s @ 45° direction	39"/s @ 45° direction
<b>Maximum Cutting Force :</b>	4.41N (450gf)		
<b>Number of Push Rollers :</b>	2 Rollers	2 Rollers	3 Rollers
<b>Specifiable Speeds (cm/s) :</b>	1 - 10, 15, 20, 25, 30, 35 40, 45, 50, 55, 60, 64	1 - 10, 15, 20, 25, 30, 35 40, 45, 50, 55, 60, 64	1 - 10, 15, 20, 25, 30, 35, 49 45, 50, 55, 60, 65, 70, 71
<b>Maximum Media Weight :</b>	11 lbs.	20 lbs.	37 lbs.
<b>Minimum Character Size :</b>	5 mm (0.197") alphanumeric Helvetica med. Font *1		
<b>Barcode \ Data Link :</b>	YES		
<b>Repeatable Accuracy :</b>	0.1 mm or less / in unit of 2 m (Designated film and cut conditions)		
<b>Interface :</b>	USB 2.0 (Full Speed) • Ethernet 10 BASE-T/100 BASE-TX • (OPTIONAL) Wireless LAN IEEE 802.11b/g/n*5		
<b>Programmable Resolution :</b>	GP-GL™ mode: 0.1 / 0.05 / 0.025 / 0.01 mm • HP-GL *3: 0.025mm		
<b>Mechanical Resolution :</b>	0.005 mm (5µm)		
<b>Resident Command Sets :</b>	GP-GL/HP-GL *3 (Control panel switching, Auto switching)		
<b>Power source :</b>	AC100-120V, AC200-240V, 50/60HZ (auto-switchover)		
<b>LCD Display :</b>	Touch Panel Screen (240-dot x 128-dot)		
<b>External Dimensions :</b>	w: 26.65" d: 17.76" h: 10.5"	w: 35.55" d: 23" h: 42.4"	w: 65" d: 32" h: 42.3"
<b>Weight (approx) *4 :</b>	24.25 lbs. (11 kg)	46.3 lbs. (21 kg)	106 lbs. (40 kg) *4
<b>Compatible Media :</b>	Mono-vinyl chloride media, fluorescent media, and reflective media up to 0.25 mm thick (Excluding high-intensity reflective film)		

**Software :** **Cutting Master 5 - Plugin**  
Adobe Illustrator - Mac/ Win  
CorelDraw - Win

**Graphtec Studio 2**  
Mac OS Software

**Windows Driver**  
AutoCad / Vector Drawing  
Software Requiring a Driver

**GRAPHTEC STANDARD WARRANTY: 2 YEARS PARTS & LABOR WITH ONLINE PRODUCT REGISTRATION**



**VIDEO TRAINING**  
PRESS PLAY ► GET TO WORK



\*1: Varies depending on the type of Graphtec- authorized film and the cutting conditions.

\*2: When using basket.

\*3: HP-GL is a registered trademark of the US Hewlett Packard Company.

\*4: Roll-medium tray or stand is included.

\*5: Optional Wireless LAN

rev 09-25